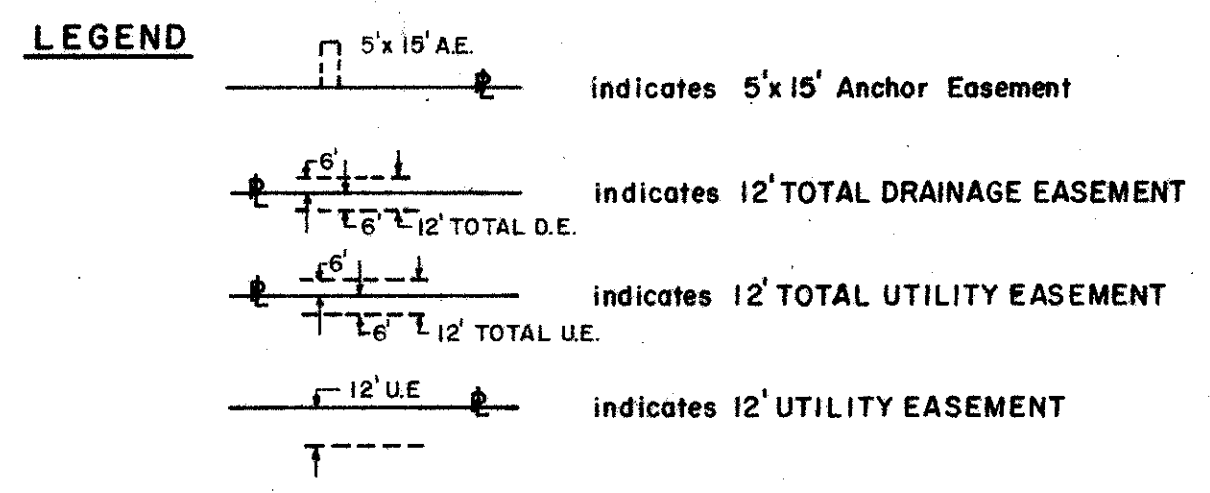


30/220

DRAWING NUMBER

DRAWING NUMBER

DRAWING NUMBER



- NOTES**
1. There shall be no buildings, structures, trees or shrubs placed in utility or drainage easements.
 2. There shall be no surface appurtenances permitted on canal maintenance easements.
 3. P.R.M. indicates Permanent Reference Monument.
 4. P.C.P. indicates Permanent Control Point.
 5. Bearings refer to an assumed meridian of the Range Line, Section 30-47-42.
 6. P.B.R. indicates Palm Beach County Records.
 7. Utilities, including franchised utilities, power and light and telegraph, water, sewer, cable television, wiring to street lights, and gas shall be installed underground.

226

SHEET 2 OF 4 SHEETS

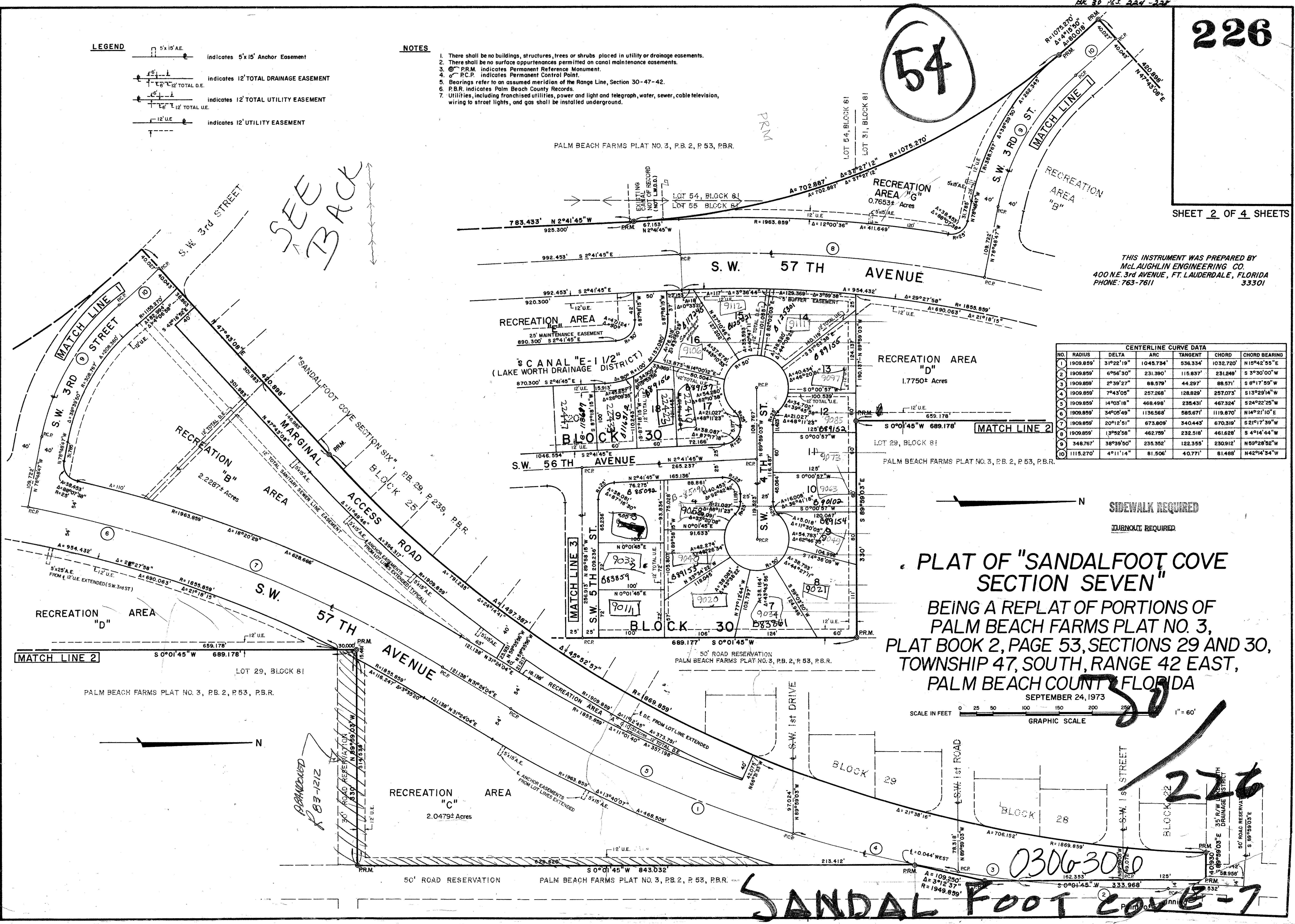
THIS INSTRUMENT WAS PREPARED BY
 McLAUGHLIN ENGINEERING CO.
 400 N.E. 3rd AVENUE, FT. LAUDERDALE, FLORIDA
 PHONE: 763-7611 33301

CENTERLINE CURVE DATA

NO.	RADIUS	DELTA	ARC	TANGENT	CHORD	CHORD BEARING
1	1909.859'	31°22'19"	1045.754'	536.334'	1032.720'	N15°42'55"E
2	1909.859'	6°56'30"	231.390'	115.837'	231.249'	S3°30'00"W
3	1909.859'	2°39'27"	88.579'	44.297'	88.571'	S8°17'59"W
4	1909.859'	7°43'05"	257.268'	128.829'	257.073'	S13°29'14"W
5	1909.859'	14°03'18"	468.498'	235.431'	467.324'	S24°22'25"W
6	1909.859'	34°05'49"	1136.568'	585.671'	1119.670'	N14°21'10"E
7	1909.859'	20°12'51"	673.809'	340.443'	670.319'	S21°17'39"W
8	1909.859'	13°52'58"	462.799'	232.516'	461.628'	S4°14'44"W
9	348.767'	36°39'50"	235.352'	122.355'	230.912'	N59°28'52"W
10	1115.270'	4°11'14"	81.506'	40.771'	81.468'	N42°14'54"W

54

SEE BACK



PLAT OF "SANDALFOOT COVE SECTION SEVEN"
 BEING A REPLAT OF PORTIONS OF
 PALM BEACH FARMS PLAT NO. 3,
 PLAT BOOK 2, PAGE 53, SECTIONS 29 AND 30,
 TOWNSHIP 47, SOUTH, RANGE 42 EAST,
 PALM BEACH COUNTY, FLORIDA

SEPTEMBER 24, 1973
 SCALE IN FEET 0 25 50 100 150 200 250
 GRAPHIC SCALE 1" = 60'

SANDALFOOT COVE-7

226

0306300

ABANDONED R 83-1212

SIDEWALK REQUIRED
TURNOUT REQUIRED